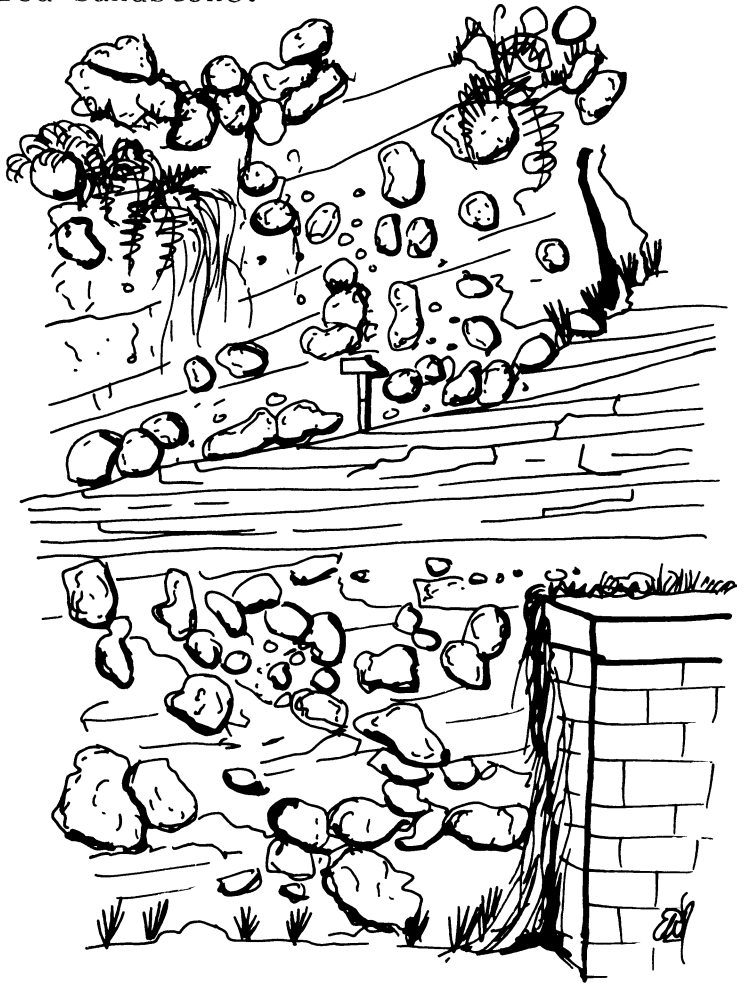


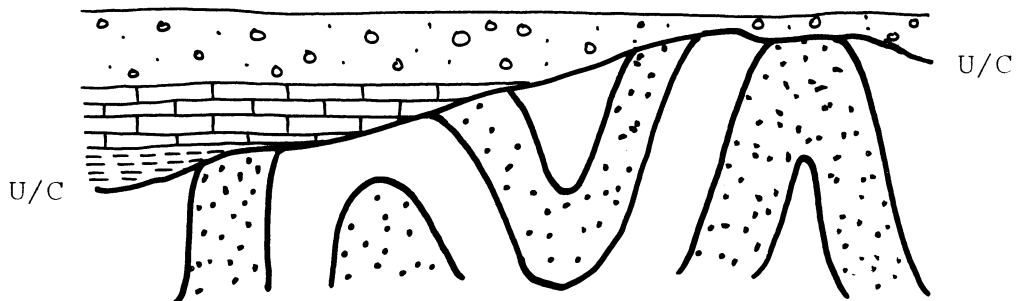
SKETCH OF THE TRIASSIC EXPOSURE AT PORT EYNON, GOWER

The outcrop consists of boulders of Carboniferous limestone within a matrix of medium-grained, red sandstone. Bisecting it is a wedge of pure red sandstone.



SCHEMATIC DIAGRAM REPRESENTING AN UNCONFORMITY

The lower sequence has been indurated, folded and eroded in its turn prior to the deposition of the younger, horizontal strata. The time-interval between the folding of the lower sequence and the deposition of the upper is represented by the plane of unconformity, ie., the eroded surface upon which the younger rocks sit.



It was the appreciation of such an unconformity which led James Hutton to appreciate that the earth was immeasurably older than had been thought. His Theory of the Earth was published in 1785.